



SOLAR

PV MOUNTING SYSTEM

Xiamen Goomax Energy Technology Co.,Ltd

Features of Goomax Solar Mounting Systems

High Strength

Stable Performance

Durability

Easy Installation

Customized Designs



Index

1. About Goomax	01
1.1 Production Base	02
1.2 Production System	04
1.3 Quality Management System	05
1.4 Logistics & Supply Chain System	06
1.5 Corporate Honor	07
2. Ground Mount Systems	09
2.1 Zn-Al-Mg Ground Mount System	10
2.2 Zn-Al-Mg Ground Mount System II	11
2.3 U-shaped Pole Ground Mount	12
2.4 Adjustable Fixed Structure II	13
2.5 Carbon steel single Pole Mounting	14
2.6 Carbon steel Dual Pole Mounting	15
2.7 Aluminum Ground Mounting System I	16
2.8 QMS Aluminum Ground Mounting System II	18
2.9 Aluminum Ground Mounting System IV	19
2.10 Aluminum Ground Mounting System V	20
2.11 Aluminum Ground Mounting System VI	21
2.12 Carpark I-Water Proof Style	22
2.13 Carpark II	23
2.14 Farmland Mounting System	24
2.15 Ground Screws	25
2.16 Solar Farm Fence	26
* Project Reference	28
3. Rooftop Mount Systems	32
3.1 BIPV Roof Mount	33
3.2 Tile Roof Mount	34
3.3 L Feet Tin Roof Mount	35
3.4 Hanger Bolt Roof Mount	36
3.5 Rail Free Roof Mount	37
3.6 Trapezoidal Metal Roof Clamps	38
3.7 Standing Seam Metal Roof Clamps	40
3.8 Adjustable Tilt Roof Mount	41
3.9 Tripod Roof Mount	42
3.10 Ballasted Roof Mount	43
3.11 Roof Mount Parts List	44
3.12.1. Rooftop Safety Walkway (L-foot)	51
3.12.2 Rooftop Safety Walkway (Self-tapping Screw)	52
* Project Reference	53



About Goomax

Xiamen Goomax Energy Technology Co., Ltd. is a high-tech enterprise that is specialized in the design, manufacturing, sales and services of photovoltaic products. We are dedicated to providing global customers with reliable and cost-effective photovoltaic system solutions. Up to now, Goomax has expanded our presence to over 100 countries and regions, and is ranked among the top solar mounting system exporters in China.

Thanks to our well experienced international R&D teams and strategic alliance with multiple universities in China, Goomax is in the leading position for its sophisticated structural designs and product performances for all sorts of solar mounting systems like solar trackers, ground mounts, roof mounts, carparks, farmland mounts etc.

Our group has two production bases in Nan'an, Fujian and Foshan, Guangdong, covering an area of 600,000 square meters, with more than 1500 employees. With the sound solar mounting industry chain, our annual production capacity of solar mountings reaches 5GW. Goomax factories and production bases are equipped with advanced aluminum profile production lines, including: mold factory, melting furnace, fully automatic extrusion production lines, oxidation production lines, powder spray line, etc., a steel rolling production lines, and ground screw production lines. Goomax solar mountings have successfully passed SGS, CE, AS/NZS 1170 and many other international & domestic certificates, and have a variety of patents at industrial leading level.

Since our establishment, Goomax has adhered to our corporate philosophy of "Superior Craftmanship, Intellectual Manufacturing". We have passed Quality System Certification ISO9001:2015 and Environmental Management System Certification ISO14001, and are honored as "Fujian Provincial Advanced Enterprise in Quality Management" "Fujian Provincial High-tech Enterprise", etc.

Why Goomax

Professional R&D Team:
more than 30 experienced engineers.

Strong Alliance:
strategic partnership with multiple universities in China.

Comprehensive Solutions:
comprehensive solutions for ground mounts, trackers, rooftop mounts, carparks, and farmland mounts etc.

Technical Support:
professional technical support for solar rack solutions, project development, and constructions

Sales Network:
over 100 countries and regions.

Annual Production Capacity:
over 5GW.

1.1 Production Base



▲ Goomax Production Headquarters

Goomax Aluminum Factory ▼



▼ Global Sales Network



Showroom ▼



1.2 Production System



Casting Furnace



Extrusion Production Lines



Aging Furnace



Oxidization Production Lines

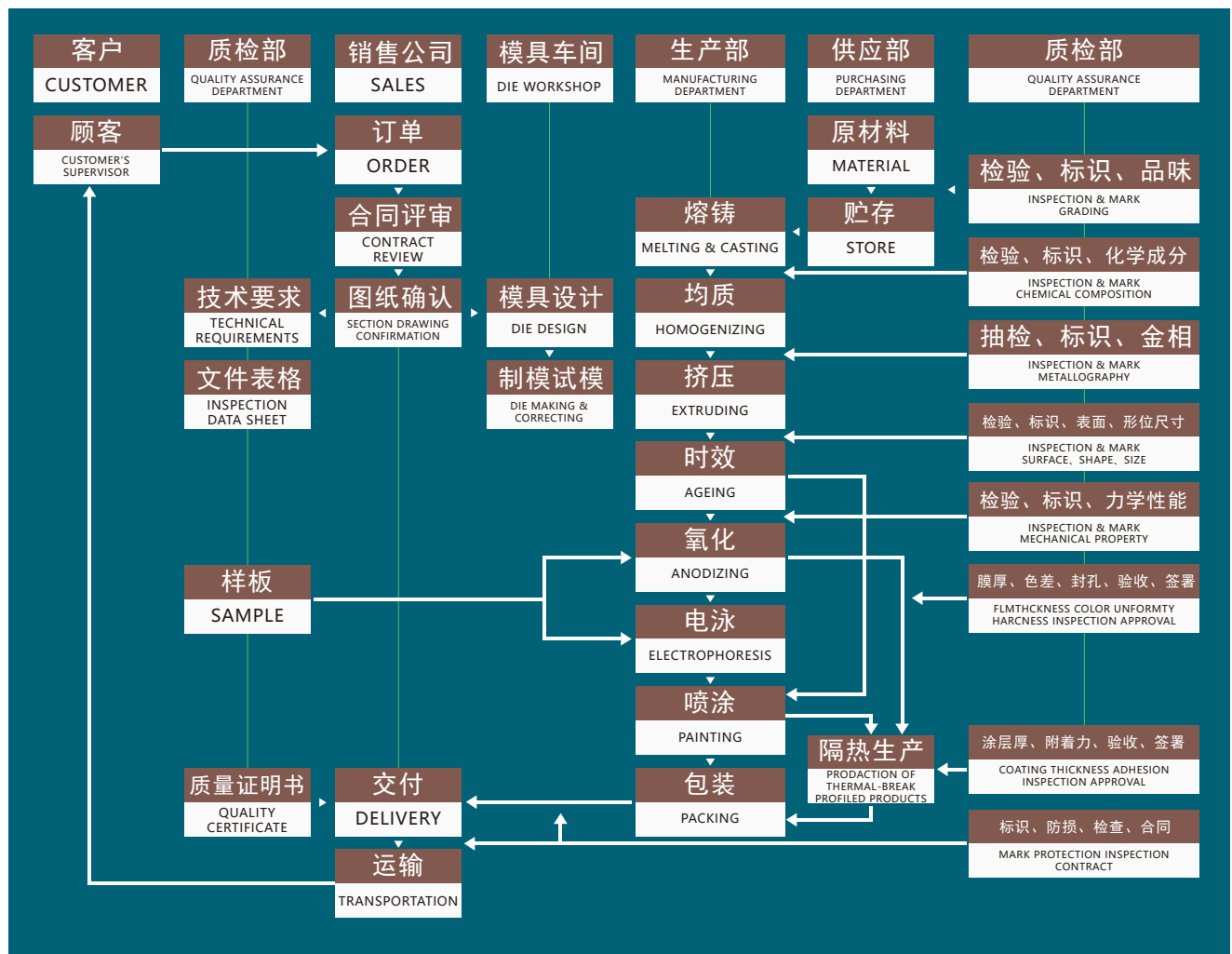


Spraying Lines



1.3 Quality Management System

Goomax implements strict quality control measures in every step of operation from raw material supply, R&D, manufacture, sales, to logistics etc.



1.4 Logistics & Supply Chain System



1.5 Corporate Honor

Goomax has obtained ISO9001:2015 quality system and ISO14001 environmental system certificates. Over the years, it has been honored as "China Top 10 Aluminum Manufacturers", "Fujian Province High-tech Enterprises", "Fujian Provincial Engineering and Technology Research Center", "Fujian Province Science and Technology Enterprises", "Fujian Provincial Leading Enterprises", and "Quanzhou City Intellectual Property Pilot Enterprises" etc., and participated in the drafting of GB/T5237 aluminum national standards and Fujian Province energy industry NB/T 10095, NB/T10093 standards. It is a well-established global enterprise in diversified fields.



Advanced Quality
Management Enterprise



High-tech Enterprises



Innovative Enterprises



China Top 10 Aluminum Manufacturers



Science and
Technology Enterprises

CF315 Certification



Patent Certificates



ISO Certificates



OHSAS 18001:2007



ISO 9001:2015



ISO 14001:2015





Ground Mount Systems

2.1 Zn-Al-Mg Ground Mount System

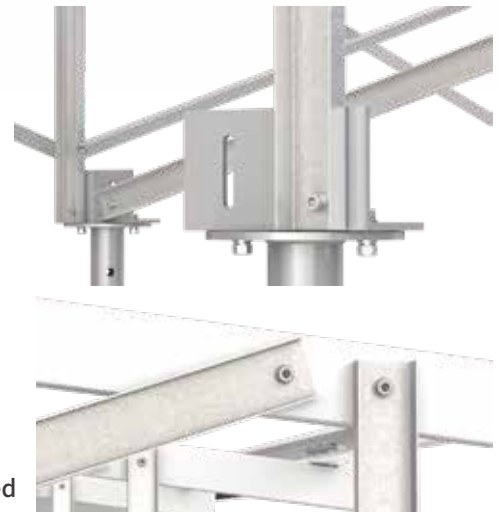


Specification

Tilt Angle: 0° - 30° Wind Load: 60m/s
 Snow Load: 1.4KN/m² Material: Zn-Al-Mg steel, SUS304

Feature

1. Stronger corrosion resistance to lower down the maintenance cost.
2. Cost effective than hot-dip galvanized steel structures.
3. Pre-assembled before shipment for easy installation on site.
4. Better corrosion & wear resistance and self-repairing features, no need regular maintenance after installation.



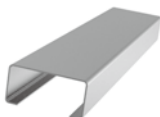
Component



①. GM-C60-1.2



②. GM-C60-1.2



③. GM-NJB-C60-1.0



④. GM-L-B01



⑤. GM-MC-XLM-C



⑥. GM-EC-35-XLM-C

2.2 Zn-Al-Mg Ground Mount System II



Specification

1. Tilt Angle: 0°- 30°
2. Wind Load: 60m/s
3. Snow Load: 1.4KN/m²
4. Application: Desert, City, Mountain, Wetland, Forest area, Seaside etc.

Feature

1. More cost-effective than hot-dip galvanized carbon steel & aluminum alloy.
2. More stable than C profile rack, especially suitable for areas with strong wind and heavy snow.
3. Pre-assembled for easy and fast installation to save the labour & time.
4. Self repair the cuttings and offer stronger corrosion resistance, compared with hot- dip galvanized carbon steel.
5. No need regular maintenance after construction, and effectively lower maintenance costs.
6. Original box-type track structure.

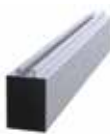
Component



① GM-EC-40-XLM-T



② GM-MC-XLM-T



③ GM-XLM-1.0-R01



④ GM-XLM-1.0-R02



⑤ GM-XLM-1.0-SA



⑥ GM-XLM-B01



⑦ GM-XLM-BR-01

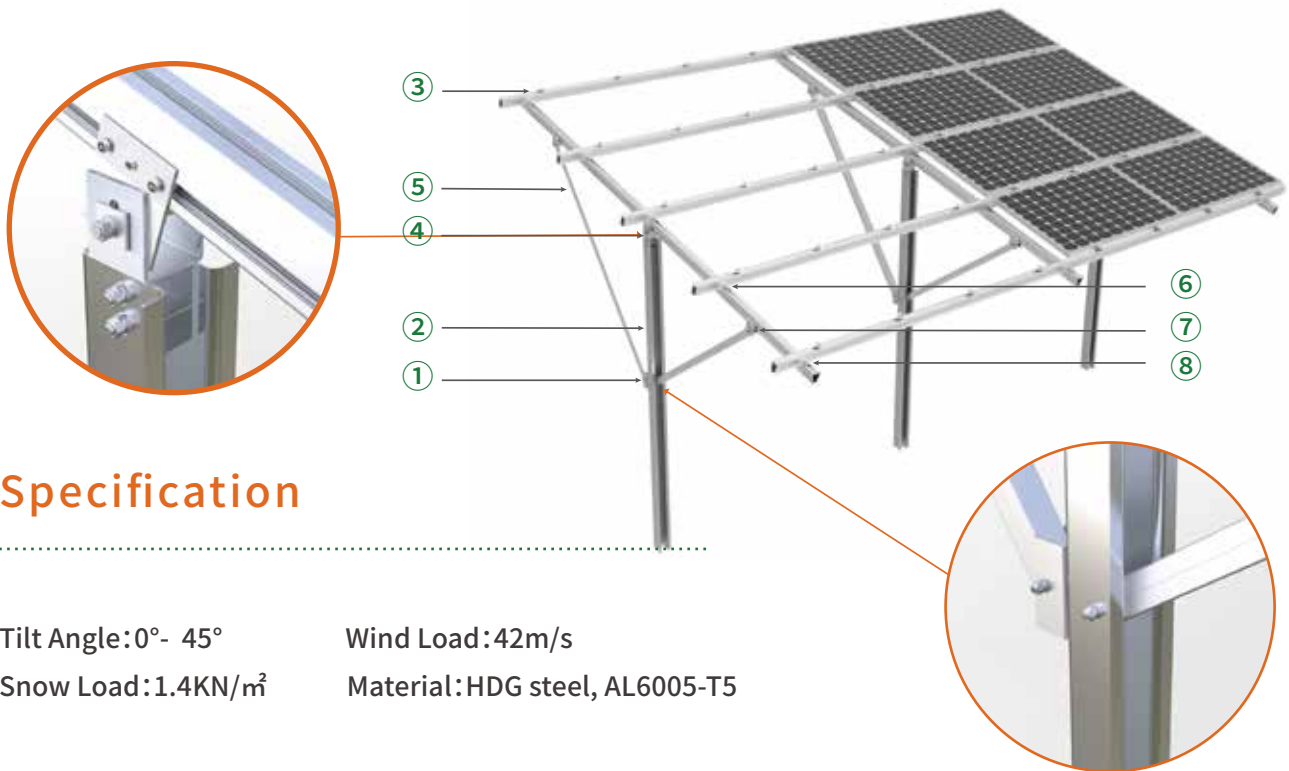


⑧ GM-XLM-RS-01



⑨ GM-XLM-U01

2.3 U-shaped Pole Ground Mount



Specification

Tilt Angle: 0° - 45°
 Snow Load: 1.4KN/m²

Wind Load: 42m/s
 Material: HDG steel, AL6005-T5

Feature

1. Made of high-quality AL6005-T5 aluminum and HDG steel applied, with strong anti-corrosion performance.
2. Main parts pre-assembled before shipment, no need processing on site, helps to save installation labor & time cost.
3. Cost-effective, individual & optimized design solution as per specific project condition.
4. All parts are tested to ensure strength requirements.
5. For hilly terrains, U-profile ramming steel pile mount can save the cost and time of ground leveling.

Component



2.4 Adjustable Fixed Structure II



Specification

1. Adjustable tilt angle (S-N): $\pm 60^\circ$
2. Adapt to East-West slope: $\pm 15^\circ$
3. Max wind load: 45m/s
4. Max snow load: 0.35KN/m^2
5. Application: Gobi desert, City, desert, mountain, wetland, seaside etc

Feature

1. Simple structure & easy installation and adjustment to lower maintenance cost.
2. Increase 3%-10% power generation compared to fixed mounting systems.
3. Simple design for easy manual adjustment .
4. Adapt to most of solar panels.

Component



① Post



② Rail supporting



③ Rail



④ Spindle

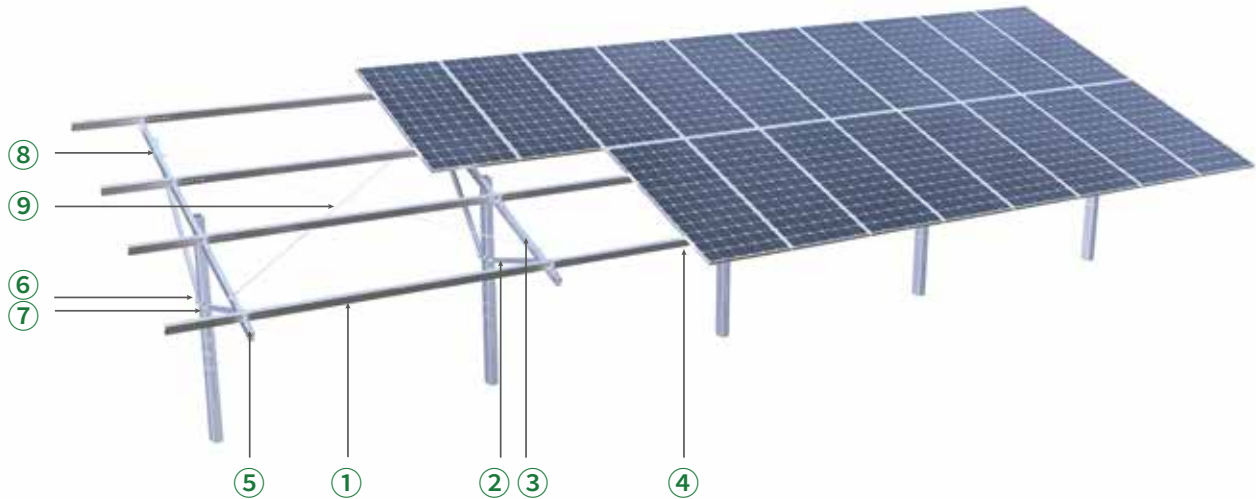


⑤ Supporting base



⑥ Adjusting base

2.5 Carbon Steel Single Pole Mounting



Specification

Tilt: 0°~45°

Windload: 40m/s

Snowload: 1.4KN/m²

Material: AL6005-T5, Q235B, SUS304

Feature

1. Suitable for rugged ground to reduce land preparation and construction time.
2. Simple structure & easy and fast installation.
3. Customized as per design reference, saving material and reducing cost while ensuring strength.

Component



①. GM-HF-01



②. GM-HF-03



③. GM-HF-04



④. GM-HF-06



⑤. GM-HF-07



⑥. GM-NY-08



⑦. GM-NY-09



⑧. GM-NY-10



⑨. GM-NY-11

2.6 Carbon Steel Dual Pole Mounting



Specification

Tilt: 0°~45°

Windload: 40m/s

Snowload: 1.4kN/m²

Material: AL6005-T5, Q235B, SUS304

Feature

1. Columns and inclined support adopt hoop type fixed connection to facilitate bracket adjustment and avoid construction mistakes.
2. Simple structure & easy and fast installation.
3. Customized as per design reference, saving material and reducing cost while ensuring strength.

Component



①. GM-HF-01



②. GM-HF-06



③. GM-HF-07



④. GM-HF-05



⑤. GM-HF-06



⑥. GM-HF-07



⑦. GM-NY-08



⑧. GM-NY-09

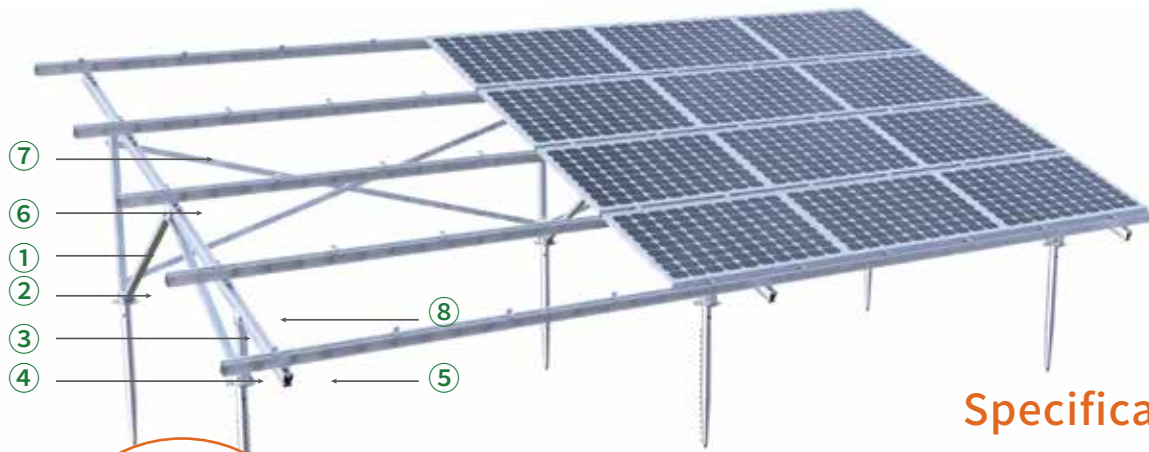


⑨. GM-NY-10



⑩. GM-NY-11

2.7 Aluminum Ground Mounting System I (Ground Screw Foundation)



Specification

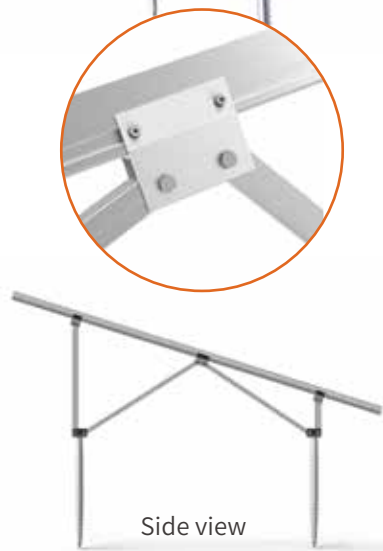
Tilt Angle: 0° - 60°

Wind Load: 60m/s

Snow Load: 3KN/m²

Feature

1. Made of high-quality AL6005-T5 & SUS304 applied, with strong anti-corrosion performance.
2. Pre-assembled for easy and fast installation to save the labor & time.
3. Cost-effective, individual & optimized design solution as per specific project condition.
4. SGS tested for all parts.
5. Flexible design combinations for actual customized demands.



Component



① GM-AG1-S2



② GM-AG1-B02



③ GM-AG1-ST



④ GM-AG1-B01



⑤ GM-R03



⑥ GM-AG1-CH02



⑦ GM-AG1-FS

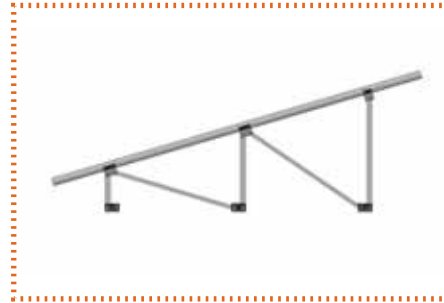


⑧ GM-AG1-H01

Mounting Structure Type



2rows、3rows、4rows、5rows



more than 5 rows

Pre-assembled Parts

* Customized design available



Front & back legs, beam and reinforced pipes are pre-assembled before shipment, which enables simple, fast and cost effective on-site installation.

Installation Steps



Drive ground screws into the soil



Mount pre-assembled parts



Fasten ground screws and pre-assembled parts



Assemble rails and reinforced pipes

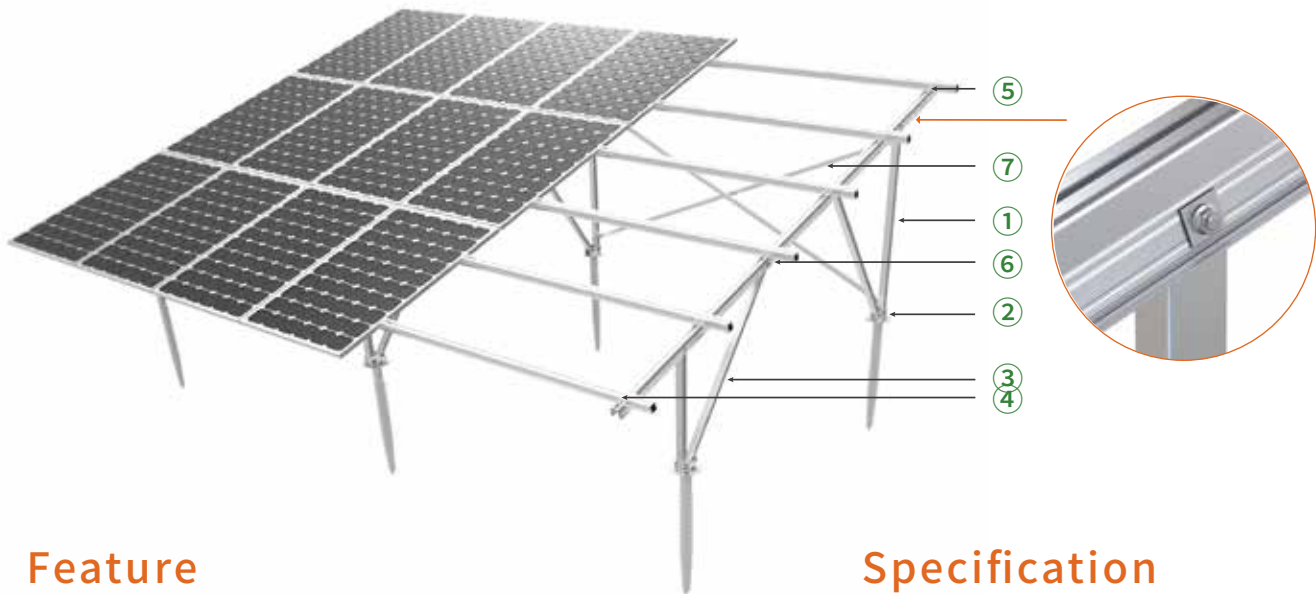


Install solar panels



End

2.8 QMS Aluminum Ground Mounting System II



Feature

1. Only bolt connection between leg & beam for easier installation.
2. New T-nuts design to enable panel installation by one person and save the labor cost.
3. Wind load <42m/s, Snow load <70CM (<50cm for snowy regions).
4. Front-leg-free solution recommended for ground clearance less than 500mm.

Specification

Tilt Angle: 0° - 45°

Wind Load: 42m/s

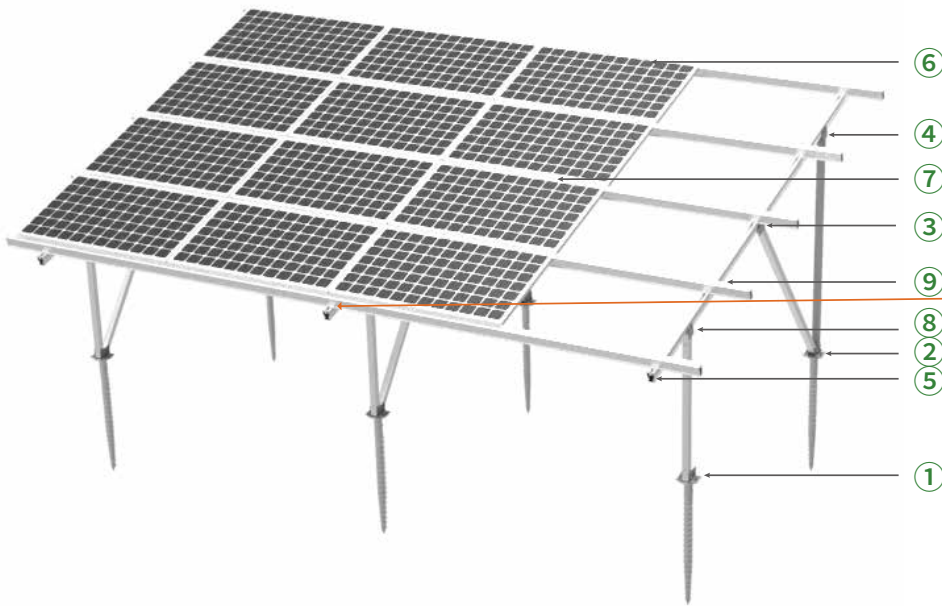
Snow Load: 1.4KN/m²



Component



2.9 Aluminum Ground Mounting System IV (Ground Screw Foundation)



Specification

Tilt Angle: 0° - 60°

Wind Load: 60m/s

Snow Load: 3KN/m²

Feature

1. Made of high-quality AL6005-T5 & SUS304 with strong anti-corrosion.
2. Pre-assembled for easy and fast installation to save the labor & time.
3. Flexible design solution available for hilly terrains.
4. Updated version for System I with built-in earthing function, which no need extra earthing components.
5. 4% cost reduced. Earthing mid clamps to simplify installation procedures and enable single-person installation.

Component



① GM-AG4-B01



② GM-AG4-B02



③ GM-AG4-CH01



④ GM-AG4-CH02



⑤ GM-BR-01-G4



⑥ GM-EC-40-G4



⑦ GM-MC-40-G4

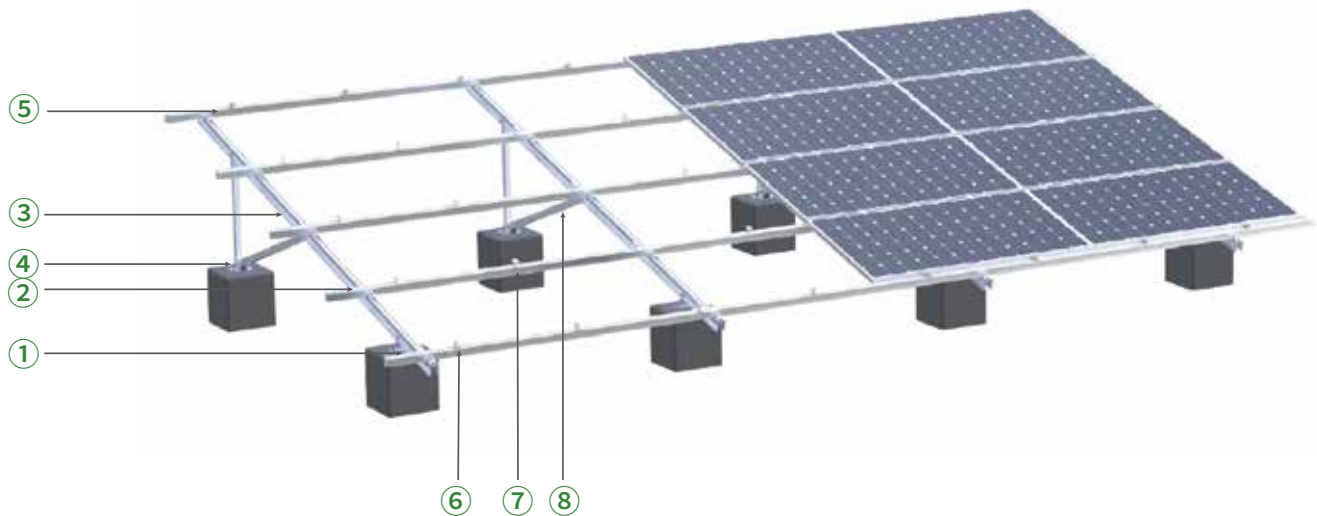


⑧ GM-R32



⑨ GM-R31

2.10 Aluminum Ground Mounting System V (Concrete Foundation)



Specification

Tilt Angle: 0° - 45°
 Wind Load: 35m/s
 Snow Load: 0.5KN/m²

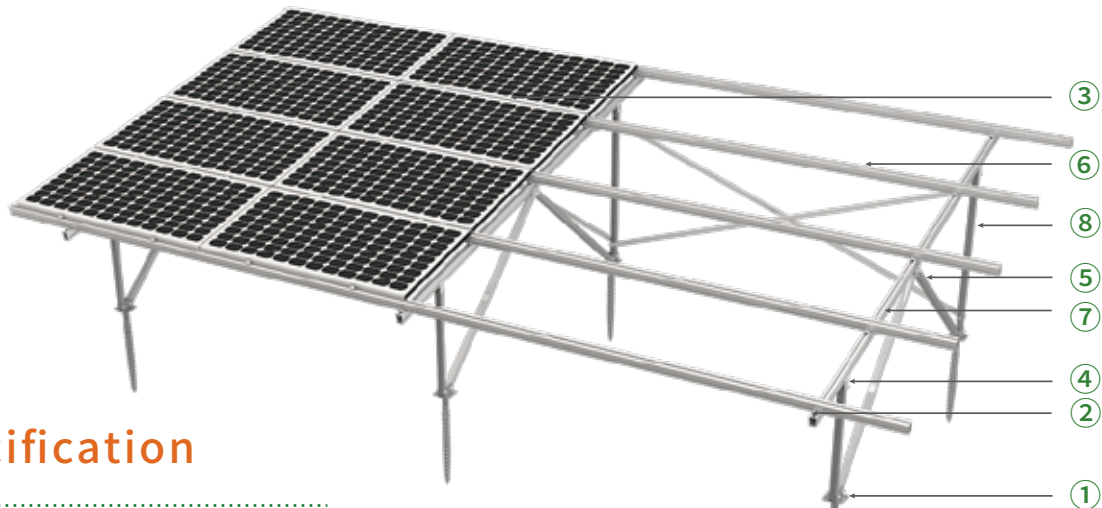
Feature

1. Only bolt connection between leg & beam for easier installation.
2. New T-nuts design to enable panel installation by one person and save the labor cost.
3. Cost-effective design for projects with low wind & snow loads.
4. Front-leg-free solution recommended for ground clearance less than 500mm.

Component



2.11 Aluminum Ground Mounting System VI



Specification

Tilt Angle: 0°- 45°

Wind Load: 35m/s

Snow Load: 1.0KN/m²

Material: AL6005-T5/SUS304

Feature

1. Made of high-quality AL6005-T5 & SUS304 materials with strong anti-corrosion.
2. Pre-assembled for easy and fast installation to save the labor & time.
3. Designed for projects with low wind & snow loads.
4. Optimized version for System II to reduce the costs while strength ensured.



Component



① GM-AG6-B02



② GM-BR-01



③ GM-MC-35-Q



④ GM-AG6-CH01



⑤ GM-AG6-CH02



⑥ GM-R31



⑦ GM-R50



⑧ GM-AG6-S

2.12 Carpark I - Water Proof Style



Specification

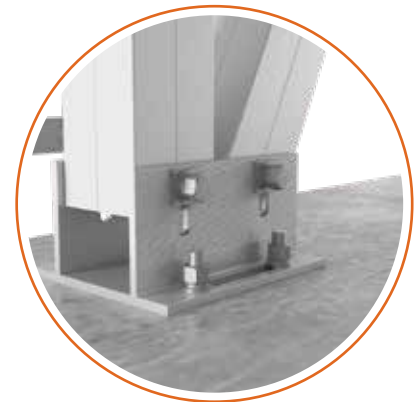
Tilt Angle: 0° - 15°

Wind Load: 60m/s

Snow Load: 3KN/m²

Feature

1. Made of high-quality AL6005-T5 & SUS304 applied, with strong anti-corrosion performance.
2. Resistant for strong wind & snow loads.
3. Excellent water-proof, Beautiful appearance, easy installation & recyclable.
4. Car parking & solar power generation, existing land fully utilized.
5. Economize the land utilization with parking and solar power generation.



Component



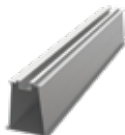
① GM-EC-35-FX



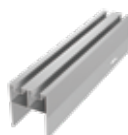
② GM-MC-35-FX



③ GM-CP-B02



④ GM-R06



⑤ GM-R07



⑥ GM-CP-S



⑦ GM-BR-01



⑧ GM-R71



⑨ GM-FSGD-01

2.13 Carpark II

Specification

Tilt Angle: 0° - 15°

Wind Load: 60m/s

Snow Load: 3KN/m²

Color: customized available



Feature

1. Made of high-quality AL6005-T5 & SUS304 applied, with strong anti-corrosion performance.
2. Resistant for strong wind & snow loads(without water-proof).
3. Easy installation.
4. Economize the land utilization with parking and solar power generation.
5. Customized available.



IV-rack



W-rack



Component



① GM-BR-01



② GM-CP-S



③ GM-R06



④ GM-R07



⑤ GM-CP1-B01



⑥ GM-EC-35



⑦ GM-M14-140



⑧ GM-MC-50-CP

2.14 Farmland Mounting System

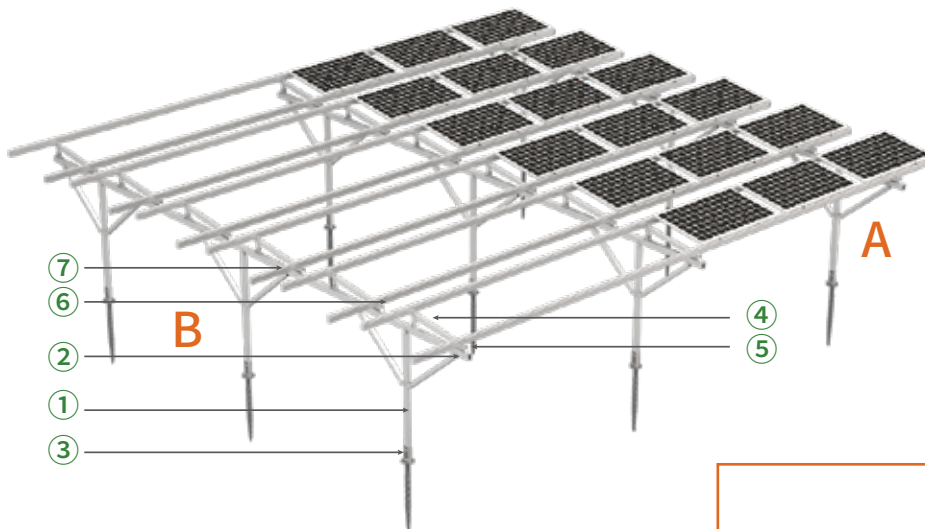
Specification

Tilt Angle: 0° - 30°

Wind Load: 45m/s

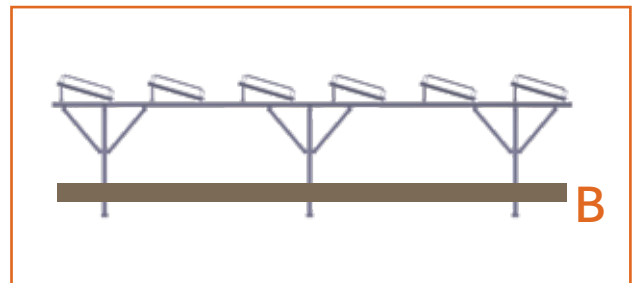
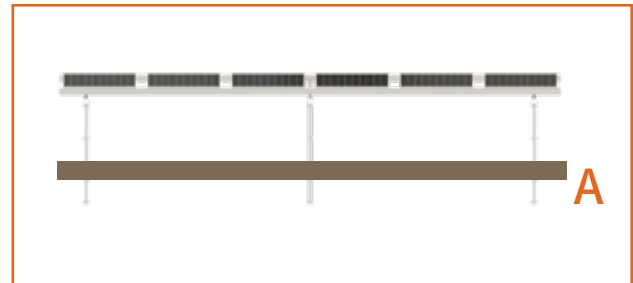
Snow Load: 1.4KN/m²

Material: AL6005-T5/SUS304

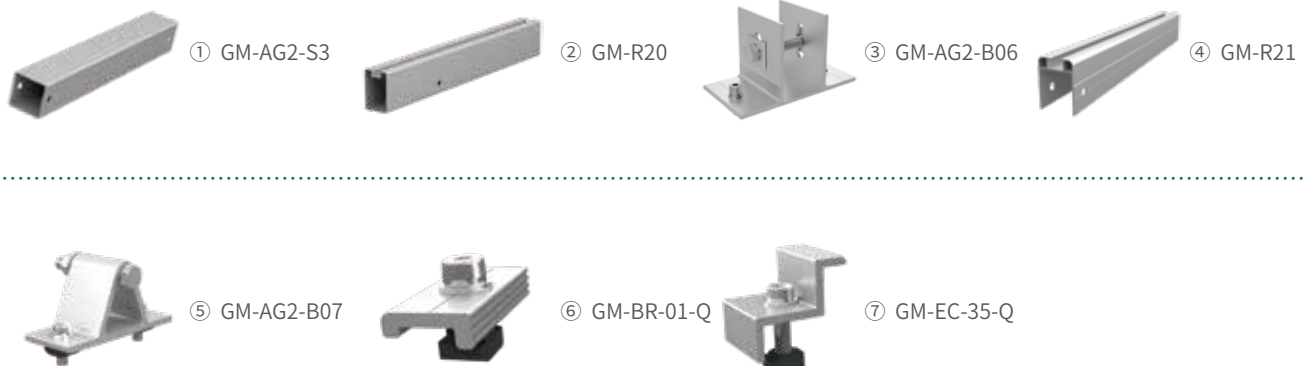


Feature

1. Strong anti-corrosion performance.
2. Resistant for strong wind & snow loads.
3. Easy installation.
4. Economize the land utilization with agricultural farming and solar power generation.



Component



2.15 Ground Screws



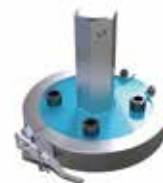
Item NO	Diameter (mm)	Thickness (mm)	Flange Diameter (mm)	Tension and pressure when the flange is 200mm above the floor									
				Clay soil N value					Sandy soil N value				
				3	5	10	15	25	3	5	10	15	25
GM-F76-1200-T3	76	3	220	4.6	8.4	17.8	27.3	45.8	6.1	8.9	15.4	22.9	36.9
GM-F76-1400-T3	76	3	220	5.9	10.6	22.4	34.3	57.7	7.7	11.2	20	28.8	46.7
GM-F76-1600-T3	76	3	220	7.3	13.1	27.6	42.1	71.2	9.4	13.8	24.7	35.7	57.4
GM-F76-1800-T3	76	3	220	8.9	15	31.6	48.2	81.4	10.8	15.8	28.2	40.9	65.9
GM-F76-2000-T3	76	3	220	9.3	17.3	36.5	55.7	94.1	12.5	18.2	32.6	47.8	75.6
GM-F76-2200-T3	76	3	220	10.7	18.1	38.3	58.8	98.8	13.4	19.2	34.3	49.5	79.9
GM-F76-2500-T3	76	3	220	11.8	20.7	43.7	66.8	112.8	15.5	21.9	39.1	56.5	90.6
GM-F76-3000-T3	76	3	220	13.9	25	52.8	80.9	136.2	18.9	26.4	47.3	68.3	109

Feature

- * Made by high strength carbon steel with 80 micron average galvanizing thickness to ensure high anti-corrosion.
- * Monthly capacity: 75,000pcs
- * Customized available

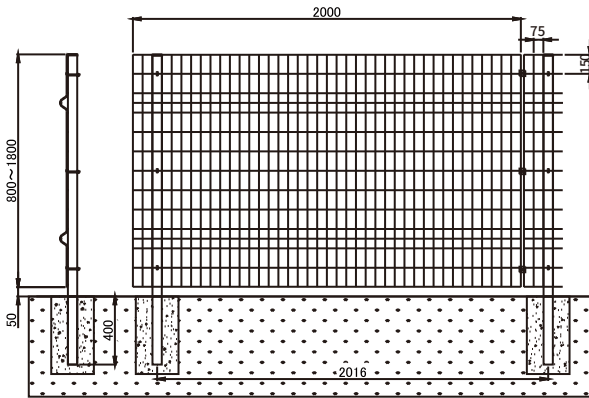


Ground Screw Styles

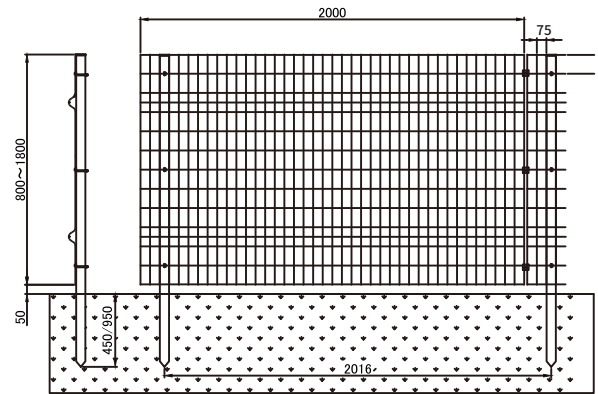


2.16 Solar Farm Fence

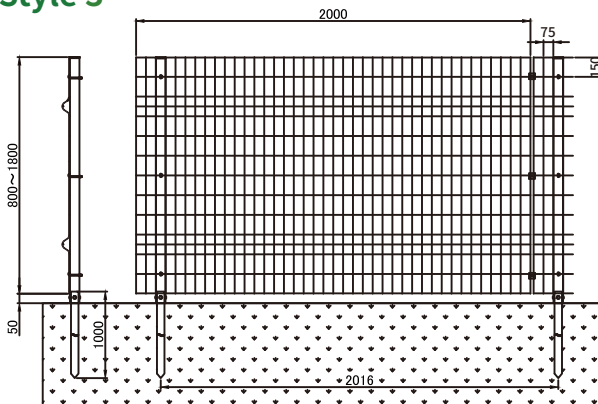
Style 1



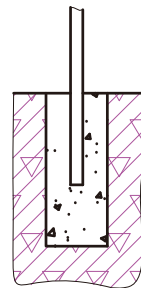
Style 2



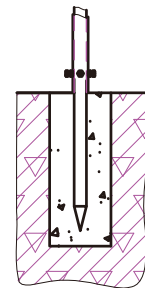
Style 3



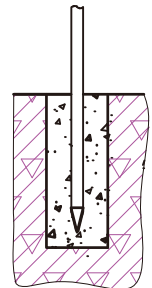
Post installation options



GM-FC-01
Buried



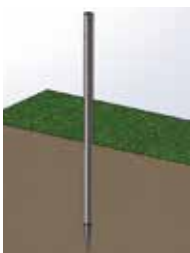
GM-FC-02
Ground screw



GM-FC-03
Piling



Post installation



1. Drive the ground screw into the soil.



2. Put the post into the ground screw.

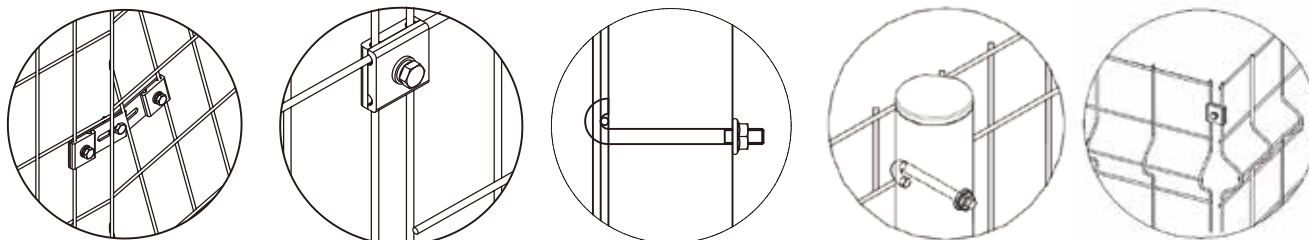


3. Adjust the post's height



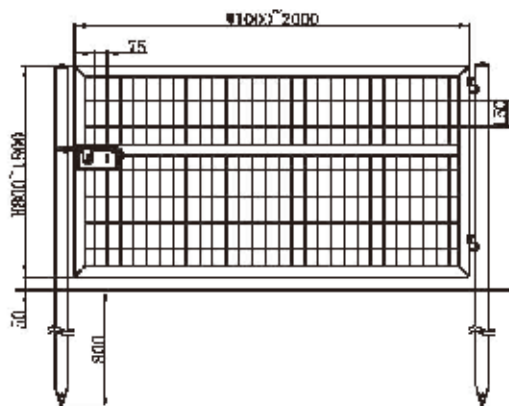
4. Fasten the post and ground screw with bolts.

Wire mesh connection styles

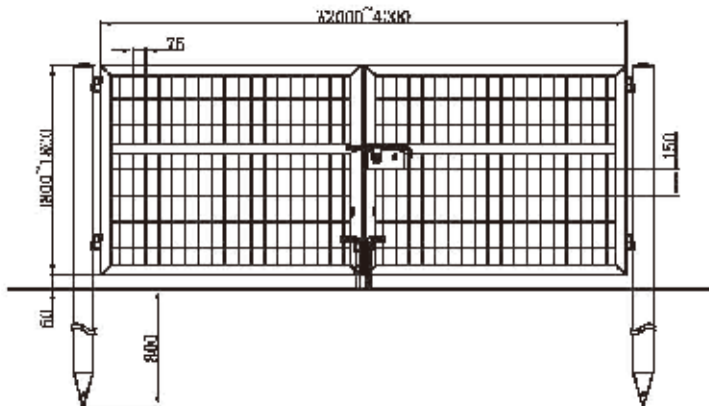


No	Item No	Height	Fence style	Assembly	Post	Wire OD	Base
01	GM-FC-01	800	Half round	Buried	φ48*2.0	φ3.0	Concrete base
02	GM-FC-01	1000	Half round	Buried	φ48*2.0	φ3.0	Concrete base
03	GM-FC-01	1200	Half round	Buried	φ48*2.0	φ3.0	Concrete base
04	GM-FC-01	1500	Half round	Buried	φ48*2.0	φ3.0	Concrete base
05	GM-FC-01	1800	Half round	Buried	φ48*2.0	φ3.0	Concrete base
06	GM-FC-02	800	Half round	Piling	φ48*2.0	φ3.0	Ground screw
07	GM-FC-02	1000	Half round	Piling	φ48*2.0	φ3.0	Ground screw
08	GM-FC-02	1200	Half round	Piling	φ48*2.0	φ3.0	Ground screw
09	GM-FC-02	1500	Half round	Piling	φ48*2.0	φ3.0	Ground screw
10	GM-FC-02	1800	Half round	Piling	φ48*2.0	φ3.0	Ground screw
11	GM-FC-03	800	Half round	Piling	φ48*2.0	φ3.0	Piling post
12	GM-FC-03	1000	Half round	Piling	φ48*2.0	φ3.0	Piling post
13	GM-FC-03	1200	Half round	Piling	φ48*2.0	φ3.0	Piling post
14	GM-FC-03	1500	Half round	Piling	φ48*2.0	φ3.0	Piling post
15	GM-FC-03	1800	Half round	Piling	φ48*2.0	φ3.0	Piling post

Single door



Double doors



Project Reference

All-aluminum ground mounting system



U-profile ramming pile mounting structure



Agricultural mounting system



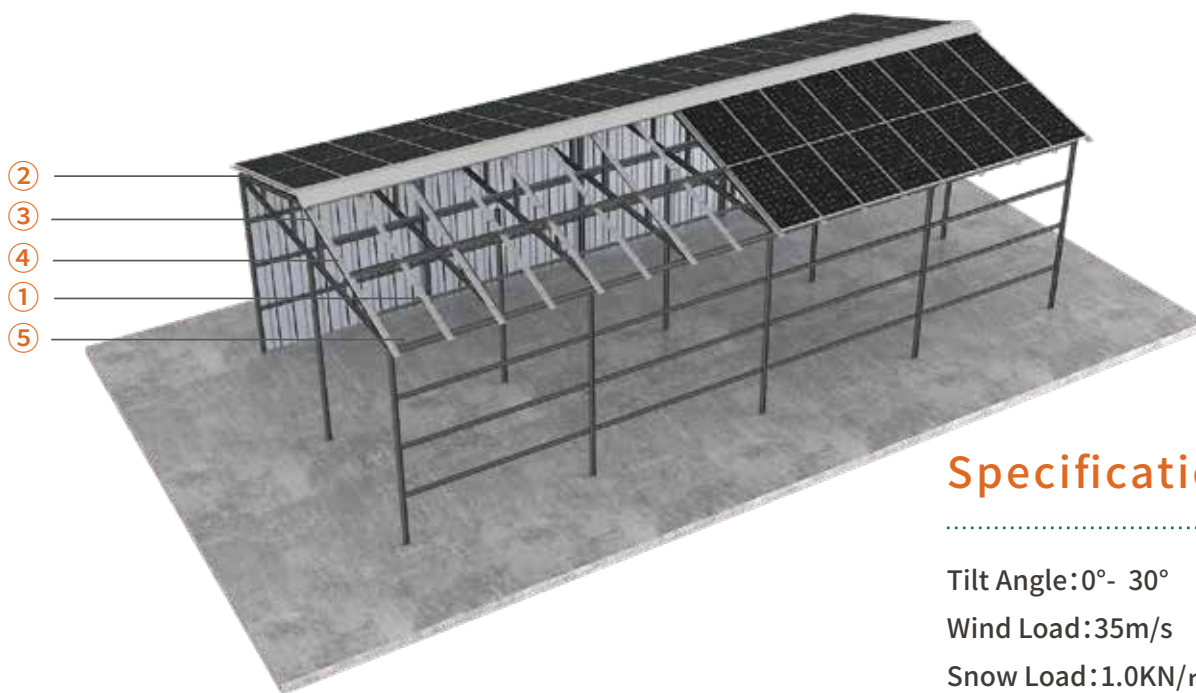
All-aluminum Carport mounting system





Rooftop Mount Systems

3.1 BIPV Roof Mount



Specification

Tilt Angle: 0° - 30°

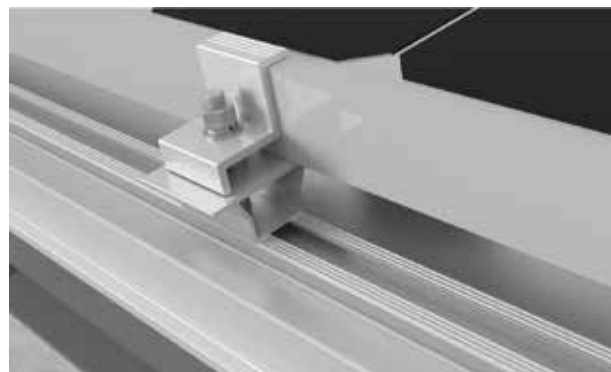
Wind Load: 35m/s

Snow Load: 1.0KN/m²

Material: AL6005-T5/SUS304

Feature

1. Equipped with drainage tray to avoid water leakage effectively.
 2. Water-proof rails can be installed easily and increase the structure strength.
 3. Lower down indoor temperature during summer.
 4. Light transmittance for good indoor day-lighting.
- Fine-looking rooftop appearance.



Component



① GM-BR-01



② GM-EC-35-FX



③ GM-FSGD-01

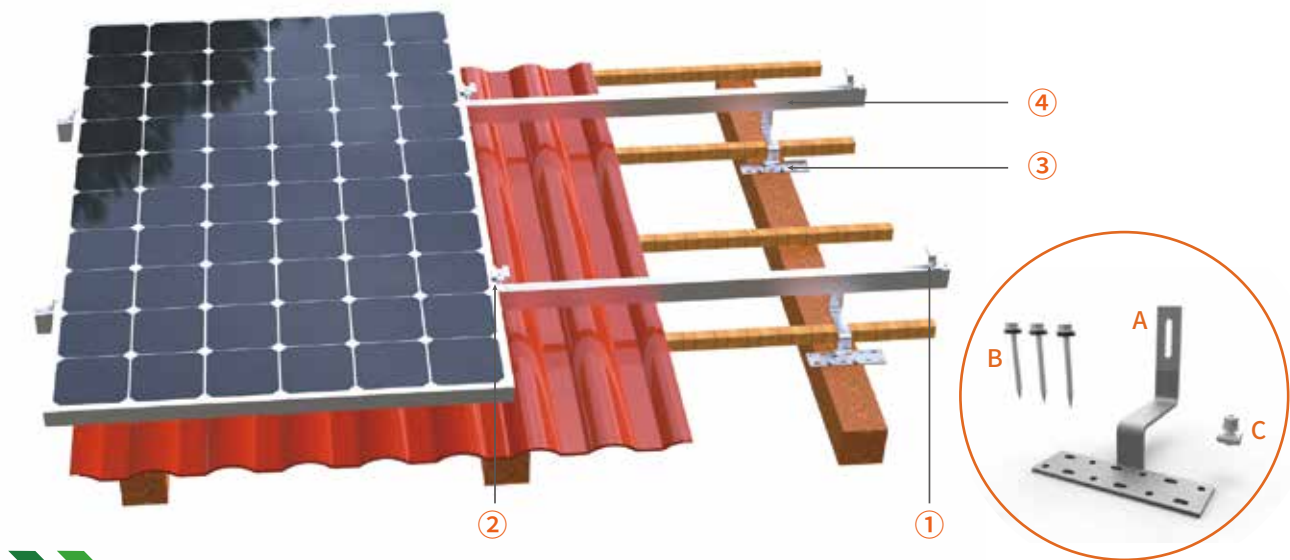


④ GM-MC-35-FX



⑤ GM-R71

3.2 Tile Roof Mount



Component



① GM-EC-35D



② GM-MC-35D



③ GM-CTH-01D



④ GM-R05-light



Component list

Components	Quantity
A.SUS304 tile hook	1
B.SC6.3×80: M6.3×80mm lug bolt	3
C.M8*25mm SUS304 bolt, rail clamp, SUS plate	1

Feature

1. Applicable for various modules.
2. Various types of hooks for different rooftops.
3. High-quality aluminum material, light weight while strength ensured.
4. Few components for easy installation
5. Recyclable.
6. Customized available.



GM-CTH-02



GM-CTH-03



GM-CTH-04



GM-CTH-05

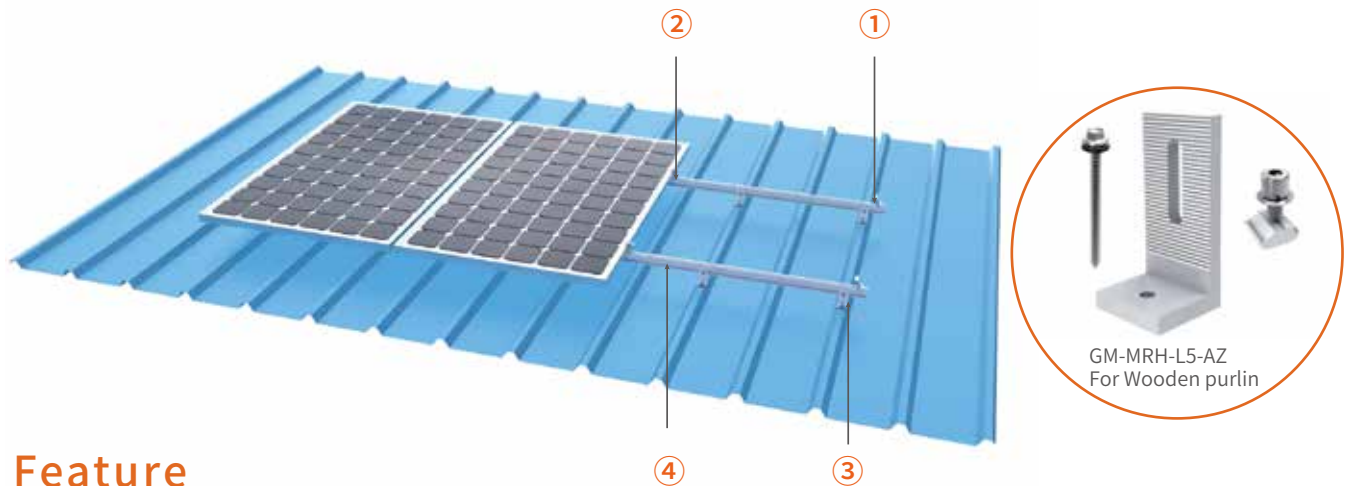


GM-CTH-06



GM-CTH-07

3.3 L Feet Tin Roof Mount



Feature

1. AL6005-T5, 10 micron anodized.
2. Easy installation, fast & efficient.
3. Water-proof EPDM provided.



L-foot can be fixed on either wooden or steel purlin, applicable for all kinds of metal sheet rooftops, including trapezoidal and standing seam styles.



Component



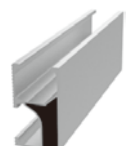
① GM-EC-35D



② GM-MC-35D

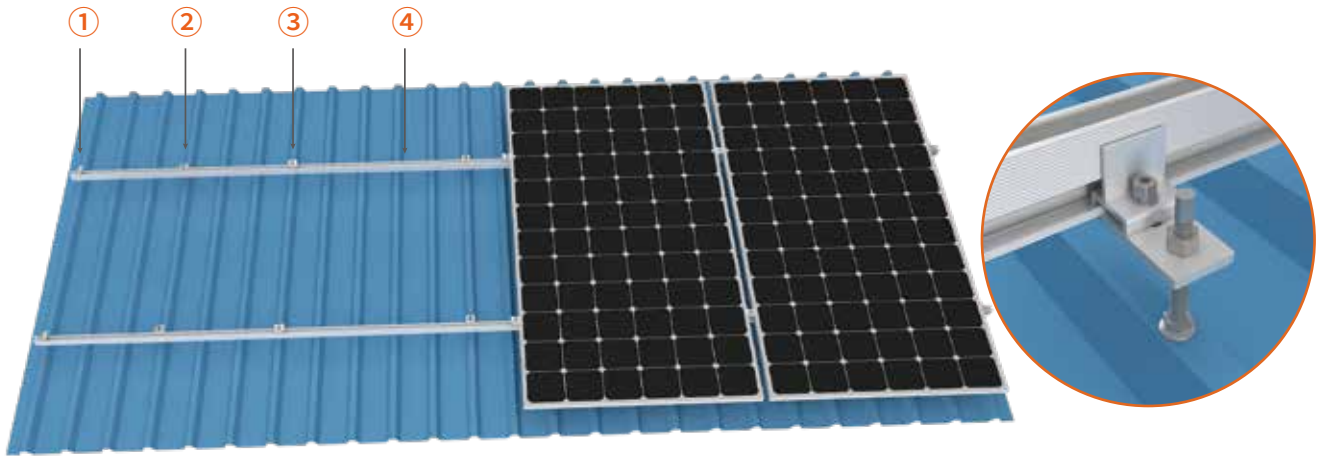


③ GM-MRH-L5D
For Steel purlin



④ GM-R05-light

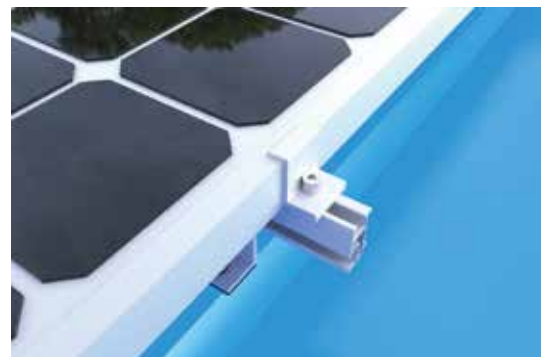
3.4 Hanger Bolt Roof Mount



Hanger-bolt can be used individually or together with L-foot to fix the rail.

Feature

1. Applicable for various module dimensions.
2. Hanger-bolt for flexible & easy installation.
3. Made of high-quality AL6005-T5 & SUS304, high strength & anti-corrosion, longer service life.
4. Universal for most metal sheet rooftops.
5. Recyclable.
6. Customized available.



Component



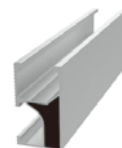
① GM-EC-35D



② GM-MC-35D

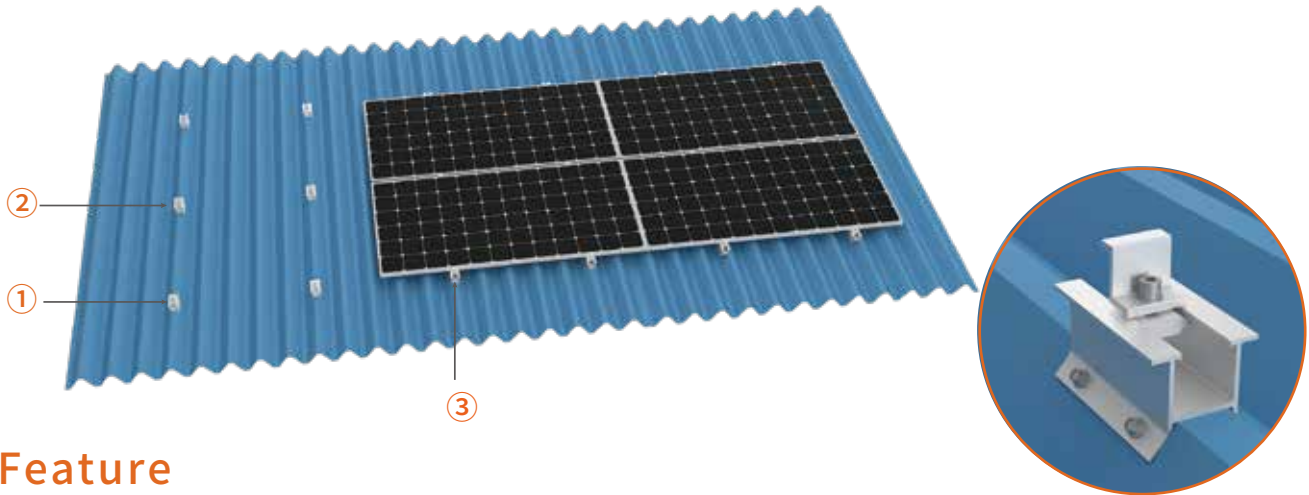


③ GM-MRH-LDS-03D



④ GM-R05-light

3.5 Rail Free Roof Mount

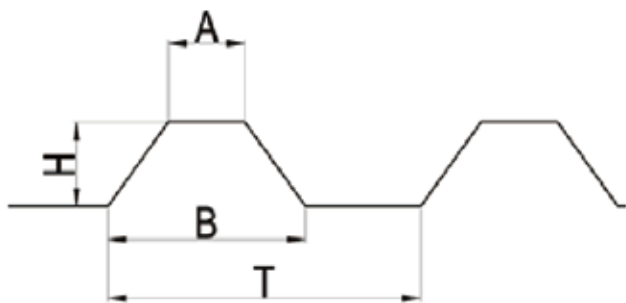


Feature

1. Applicable for various module dimensions.
2. Rail-free design for easy installation.
3. Made of high-quality AL6005-T5 & SUS304, high strength & anti-corrosion, longer service life.
4. With EPDM rubber, good thermal insulation, strong wind resistance
5. Recyclable.
6. Customized available.



Component



Types and dimensions of metal roof sheets (mm)

Style	A	H	B	T
88	35	88	165	200
150	40	150	210	250
S60	50	170	250	300



①. GM-EC-35-R



②. GM-MC-35-R



③. GM-MRH-T1

3.6 Trapezoidal Metal Roof Clamps

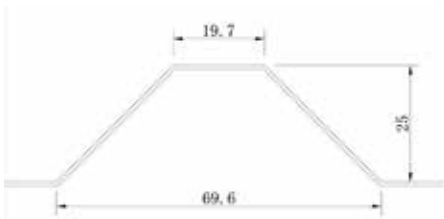
Feature

1. Easy & fast installation.
2. Made of high-quality AL6005-T5 & SUS304.
3. Fine surface treatment for good anti-corrosion.
4. With EPDM rubber.
5. Built-in bolt & rail nut, no need extra accessories.

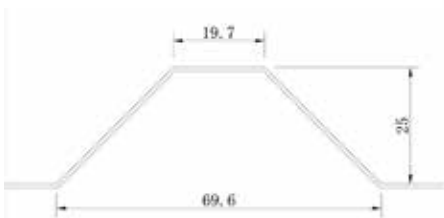
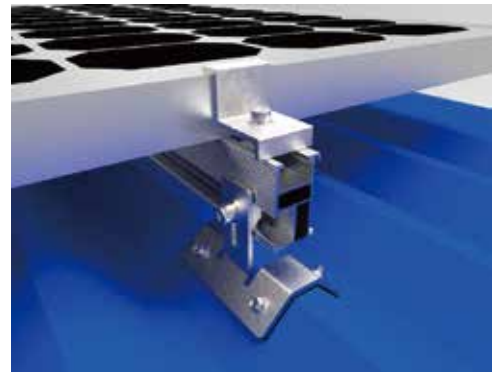
* Available for both Landscape and Portrait module arrays on trapezoidal metal rooftops.



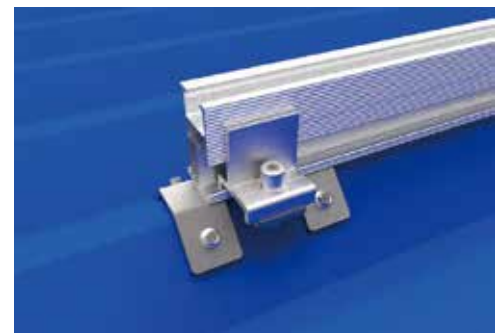
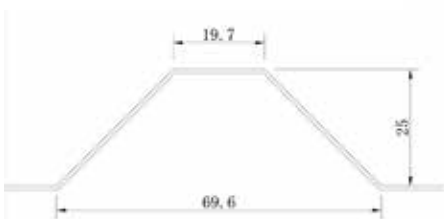
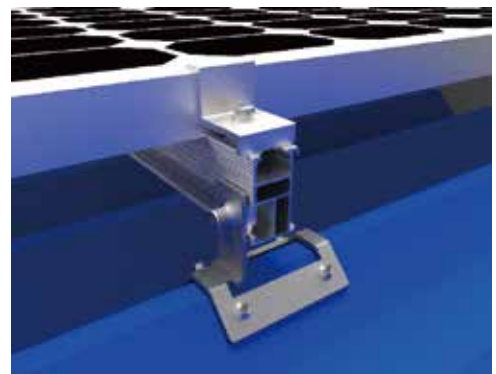
Component



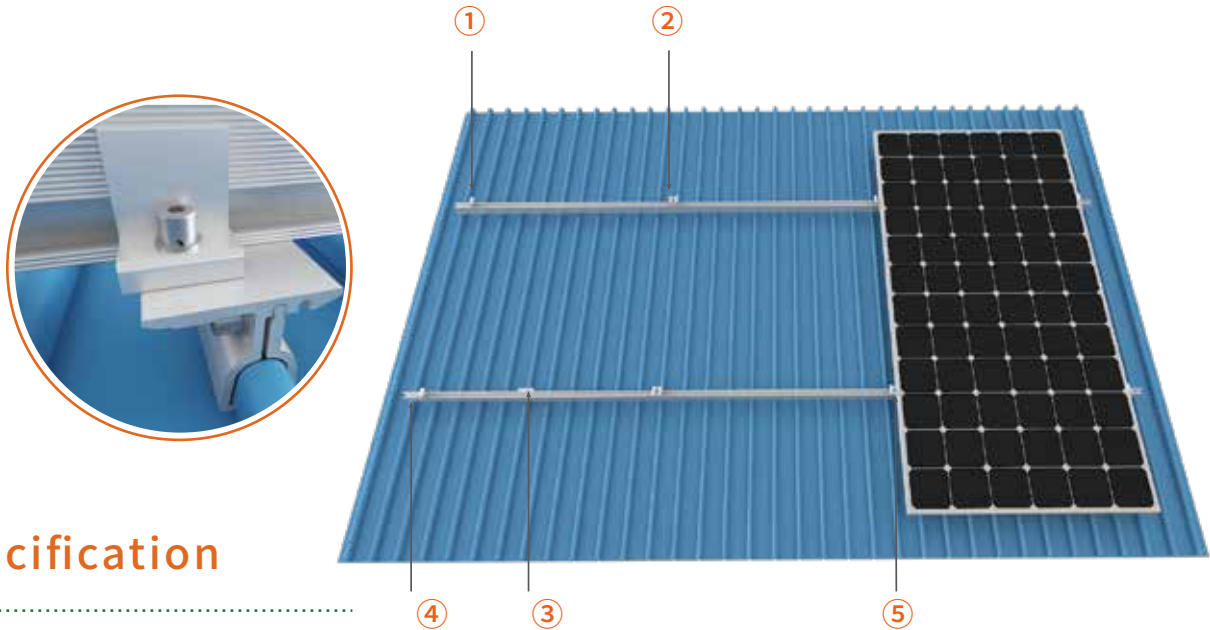
GM-MRH-01



GM-MRH-02



3.7 Standing Seam Metal Roof Clamps



Specification

Wind load: 45m/s

Snow load: 1.5N/m²

Feature

1. Specially designed for specific metal sheet dimensions.
2. Made of high-quality AL6005-T5 & SUS304 with high strength and anti-corrosion.
3. Easy installation with Kliploks and panel clamps applied.
4. Good water-proof and cost effective.



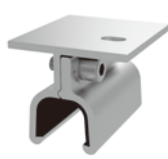
Component



① GM-EC-35D



② GM-MC-35D



③ GM-MRH-07-M-B



④ GM-R05-light

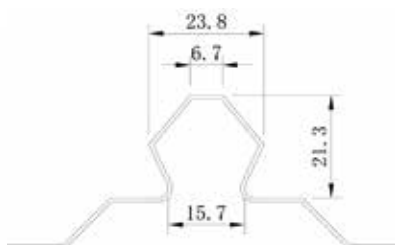


⑤ GM-BR-02D

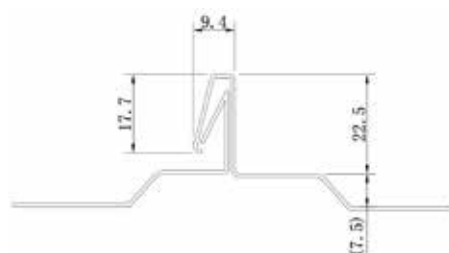
Kliplok



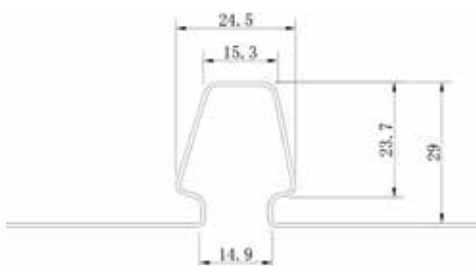
GM-MRH-04



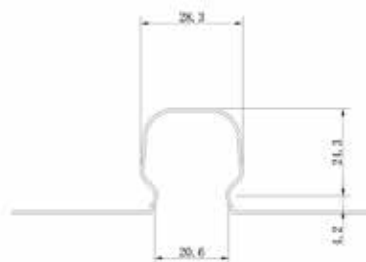
GM-MRH-05



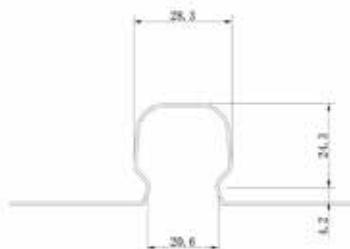
GM-MRH-06



GM-MRH-07



GM-MRH-07-M



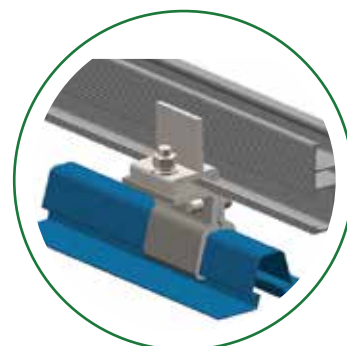
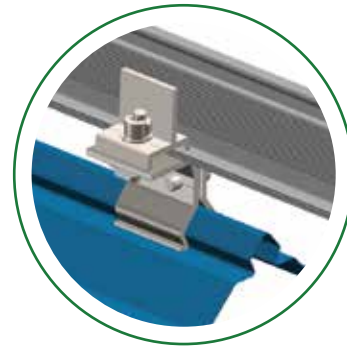
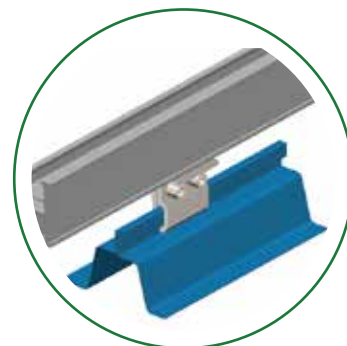
GM-MRH-10-B



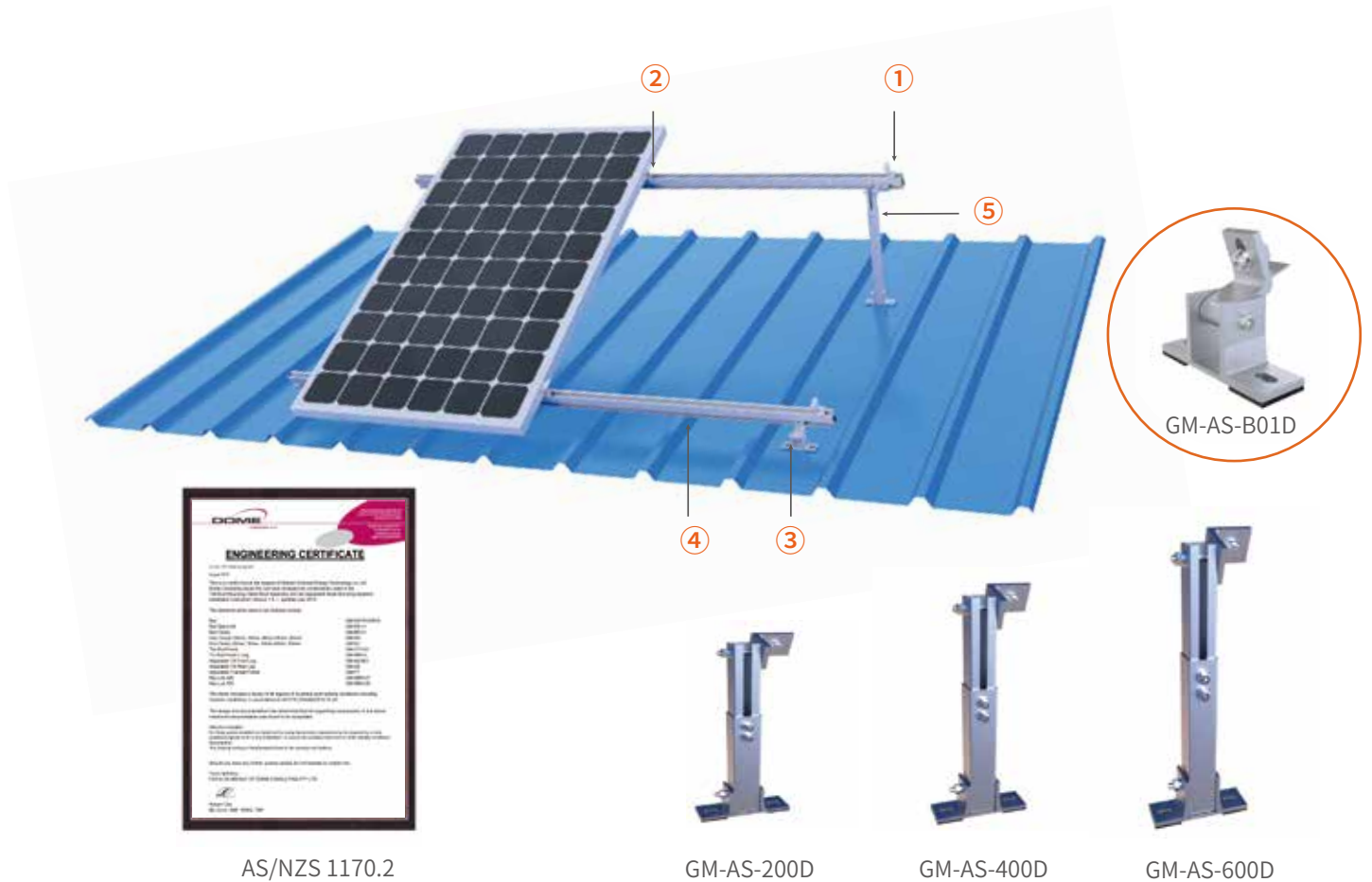
1. Easy & fast installation

2. AL6005-T5 anodized aluminum

3. Customized available

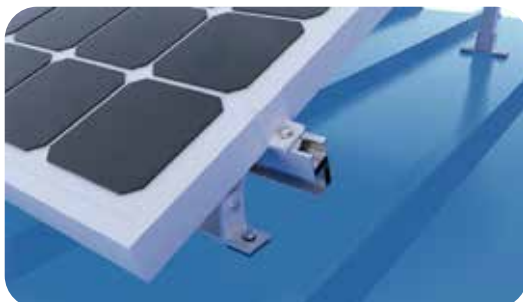


3.8 Adjustable Tilt Roof Mount

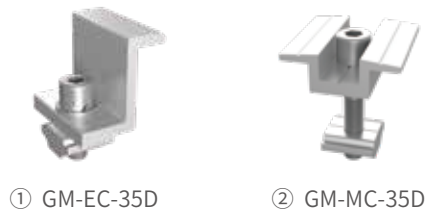


Feature

1. Few components for easy & fast installation, labor & time cost saved.
2. Flexible & adjustable, applicable with different tilt angle ranges.
3. Recyclable.
4. Customized available.



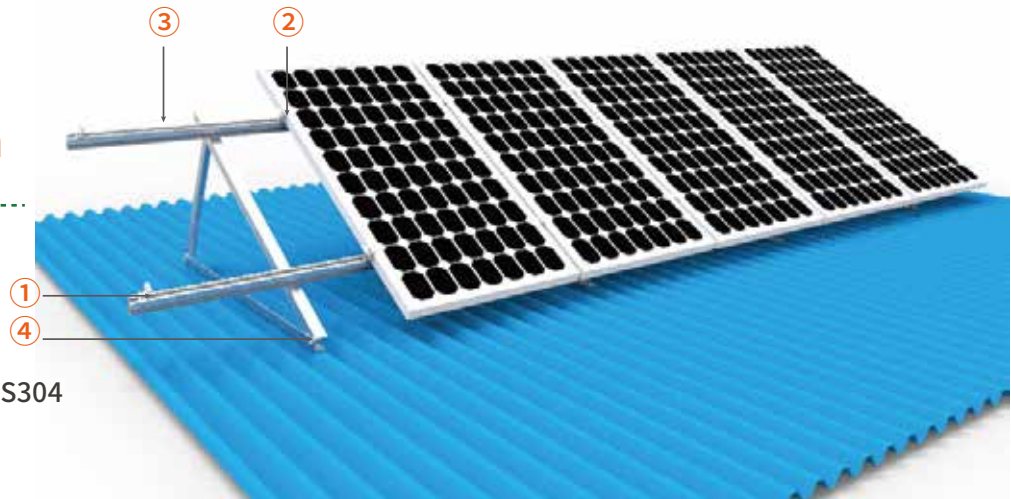
Component



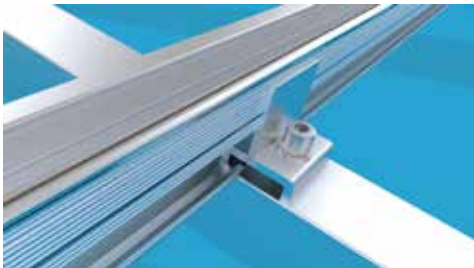
3.9 Tripod Roof Mount

Specification

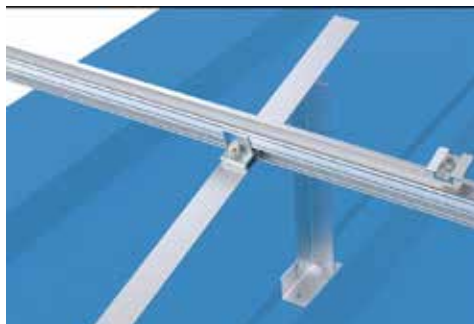
Tilt Angle: 0° - 60°
 Wind Load: 42m/s
 Snow Load: 1.4KN/m²
 Material: AL6005-T5/SUS304



* Applicable for various rooftops



Component



① GM-EC-35D



② GM-MC-35D

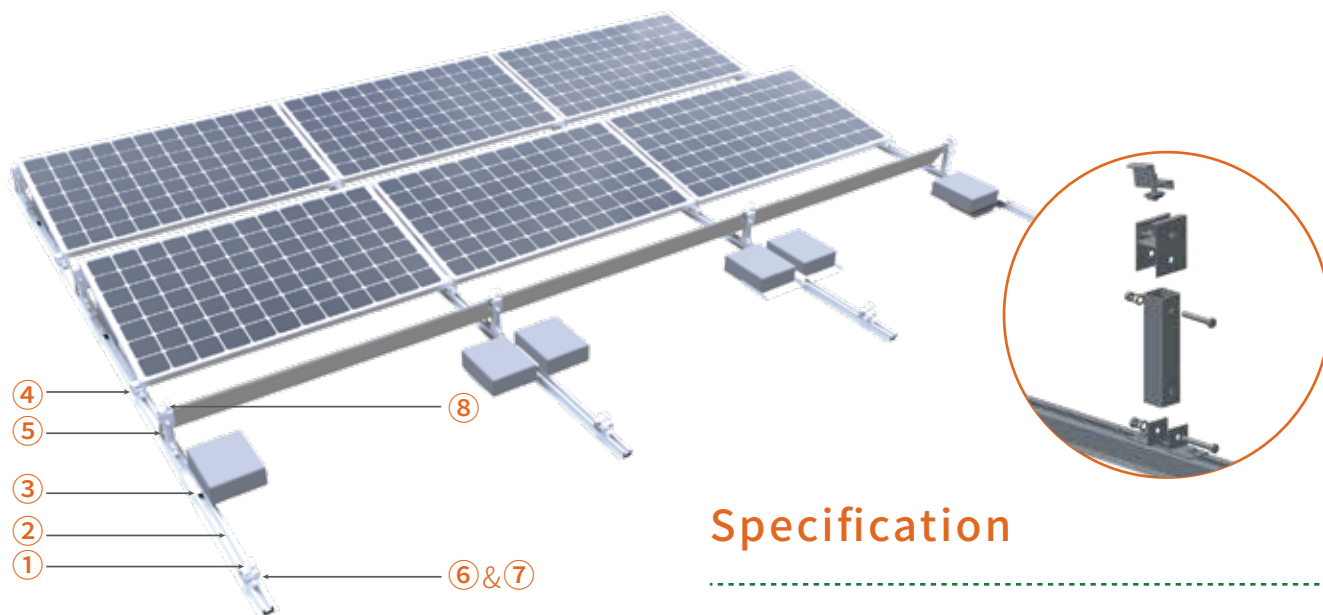


③ GM-R05-light



④ GM-FT10-01

3.10 Ballasted Roof Mount



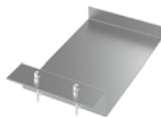
Component



① GM-EC-35D



② GM-R11



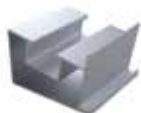
③ GM-BS-EBP-AL



④ GM-BS-MBP-AL



⑤ GM-BS-RE-10



⑥ GM-BS-FF-10



⑦ GM-BR-01D



⑧ GM-MC-35D

Specification

Tilt Angle: 0°- 15°

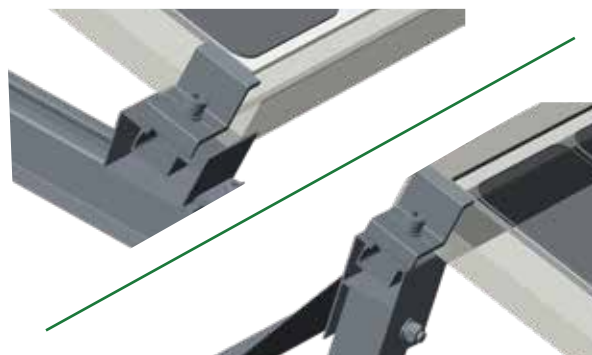
Wind Load: 42m/s

Snow Load: 1.4KN/m²

Material: AL6005-T5/SUS304

Feature

1. Applicable for various modules.
2. Ballast blocks applied without damage of rooftop, thermal insulation achieved; for penetration-allowed rooftops, fixing with expansion/ chemical bolts.
3. Various tilt angles designed for specific projects .
4. Easy & fast installation.



3.11 Roof Mount Parts List


Rail & Rail Splice

Product Picture	Item Number	Description
	GM-R01	#01 Rail with spec 57*33.5mm
	GM-R56	#56 Rail with spec 55*28mm
	GM-R69	#69 Rail with spec 52*28mm
	GM-R05-light	#05 Rail with spec 50*28mm
	GM-R02-Light	#02 Rail with spec 52*32mm
	GM-RS-05-L-150-BD	Rail splice (150mm)
	GM-RS-01-L-150	Rail splice (150mm)
	GM-R06-Light	#06 H Rail with spec 52*32mm
	GM-RS-06D	H Rail Splice (150mm)
	GM-R64	#64 Rail with spec 40*25mm
	GM-RS-64-L	Rail splice







Mid Clamp

Product Picture	Item Number	Description
	GM-MC-30D	30mm Middle clamp
	GM-MC-35D	35mm Middle clamp
	GM-MC-40D	40mm Middle clamp
	GM-MC-45D	45mm Middle clamp
	GM-MC-50D	50mm Middle clamp


End Clamp

	GM-EC-30D	30mm End Clamp
	GM-EC-35D	35mm End Clamp
	GM-EC-40D	40mm End Clamp
	GM-EC-45D	45mm End Clamp
	GM-EC-50D	50mm End Clamp

Adjustable Mid & End Clamp

Product Picture	Item Number	Description
	GM-MC-35(40)-AZ	35/40mm middle clamp
	GM-EC-35(40)-AZ	35/40mm end clamp
	GM-MC-30(40)-AZ	30/35/40mm middle clamp
	GM-EC-30(40)-AZ	30/35/40mm end clamp
	GM-MC-35/50-D	35-50mm adjustable middle clamp
	GM-EC-35/50-D	35-50mm adjustable end clamp



Thin film Mid & End Clamp

	GM-MC-60-TF2D	60mm thin film middle clamp
	GM-EC-60-TF2D	60mm thin film end clamp

Ceramic Tile Rooftop

Product Picture	Item Number	Description
	GM-CTH-01D	Tile hook Kit with Q235 M6.3*80 lag screw
	GM-CTH-11-AZ	Tile hook Kit 1# extender
	GM-CTH-03-AZ	Stainless steel tile roof hook 3#
	GM-CTH-04-AZ	Stainless steel tile roof hook 4#r
	GM-STH-01-AZ	Flat roof hook 1#
	GM-STH-02-AZ	Flat roof hook 2#

Tin roof Hook

	GM-MRH-L5D	80mm L feet with ST6.3*75 Q235 self tapping screw for steel purlin
	GM-MRH-L14D	110mm L feet with ST6.3*75 self tapping screw for steel purlin
	GM-MRH-LDS-03D	L foot & Double teeth screw











Accessories

Product Picture	Item Number	Description
	GM-EKD	Grounding lug
	GM-E-EL-04	Earthing clip
	GM-XJ-AZ	2 wires Panel wire clip
	GM-SL-XJ-AZ	Plastic Rail Cable Clip
	GM-BN-25-AZ	T Nut with M8x25 bolt
	GM-CT-AZ	SUS304 CABLE TIE



Adjustable tilt

	GM-AS-B01D	Tilt Arm Front
	GM-AS-200D	Tilt Arm Rear 10/15°
	GM-AS-400D	Tilt Arm Rear 15/30°
	GM-AS-600D	Tilt Arm Rear 30/60°

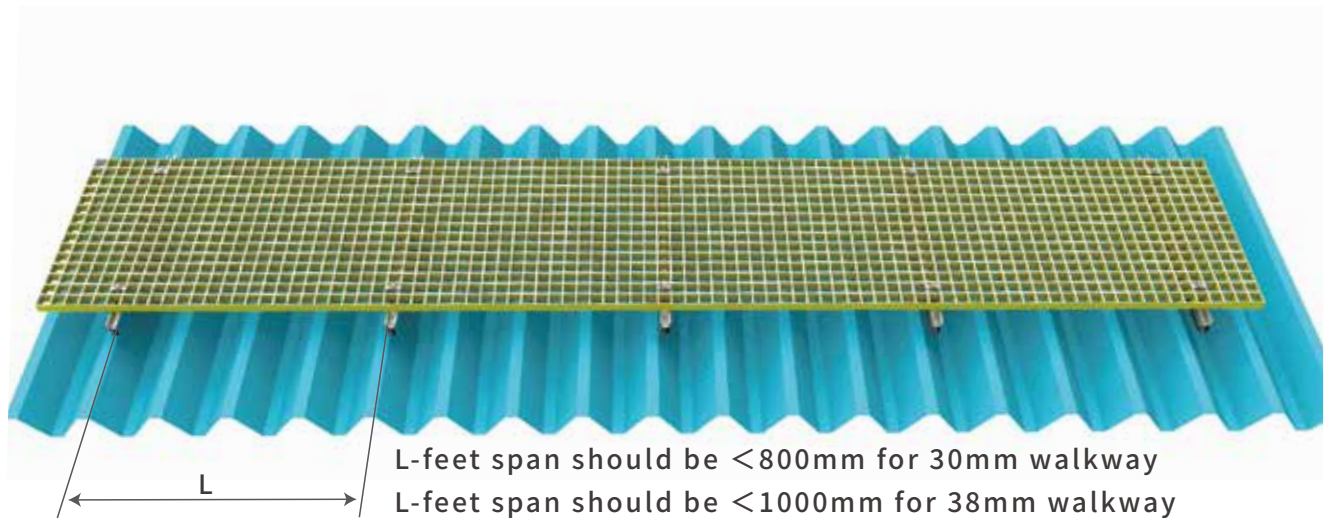
Stand Seam Kliplik

Product Picture	Item Number	Description
	GM-MRH-10-B	#10 Metal roof hook (65mm)
	GM-MRH-05-B	#05 Metal roof hook (70mm)
	GM-MRH-06-M	#406 Kliplik (65mm)
	GM-MRH-07-M-B	Small #700 metal roof hook (70mm)
	GM-MRH-07	Big #700 Kliplik
	GM-MRH-15-T	#15 Kliplik (50mm)
	GM-MRH-19	Small 700 & 406 universal Kliplik
	GM-MRH-20	Big 700 & 406 universal Kliplik
	GM-MRH-T6-100D	Railess metal roof hook (100mm)
	GM-MRH-06-S	Kliplik 406 (50mm) with EPDM and T bolt for #06 H Rail

Tripods

Product Picture	Item Number	Description
 	GM-BR-02D	Rail clamp
	GM-FT10-01	10 degree tripod-P
	GM-FT15-01	15 degree tripod-P
	GM-FT20-01	20 degree tripod-P
	GM-FT25-01	25 degree tripod-P
	GM-FT30-01	30 degree tripod-P
	GM-LAFT-01	5°~10° adjustable tripod-P
	GM-LAFT-02	15°~20° adjustable tripod-P
	GM-LAFT-03	25°~40° adjustable tripod-P
	GM-LAFT-04	45°~60° adjustable tripod-P

3.12.1. Rooftop Safety Walkway (L-foot)



The walkway is installed on rooftops for installers and O&M operators to walk safely on the rooftops. It can effectively distribute the pedestrian load on the roof, protecting the roof from unnecessary damage and preventing people from falling.

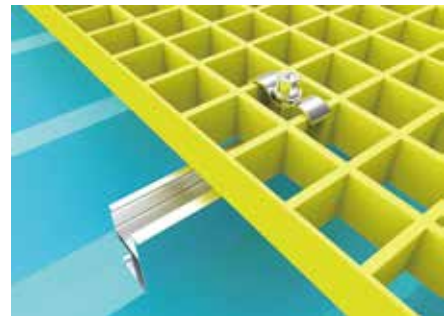
Optional Specifications:

3660*600*30mm、3660*500*30mm、3660*400*30mm
 3660*600*38mm、3660*500*38mm、3660*400*38mm



Features

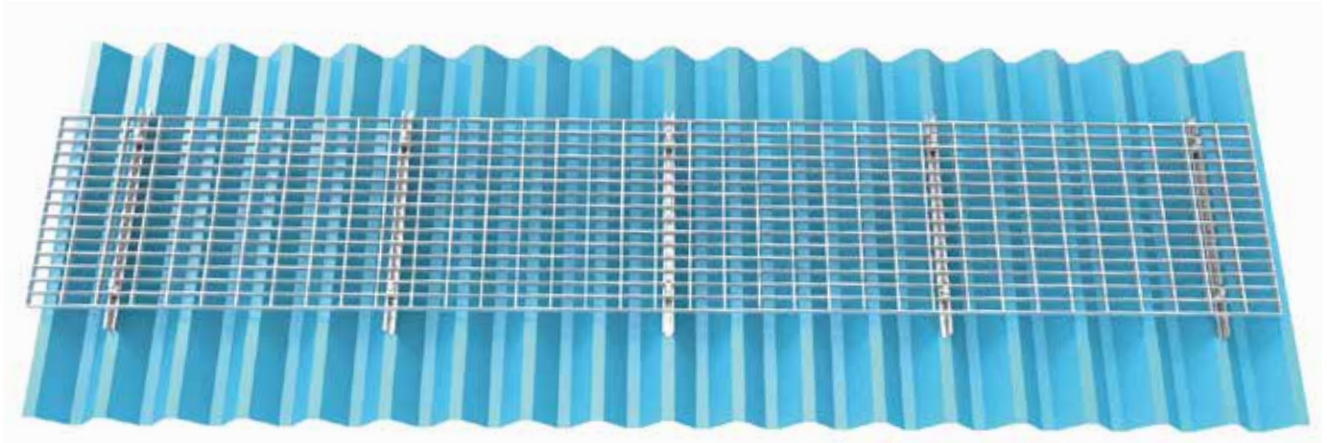
1. Material: Fiberglass-Reinforced Plastics, Durable, Fireproof
2. Standard: JC/T 1026-2007
3. Load bearing capacity: 100kg/ m²
 (30mm: L-feet span<800mm, 38mm: L-feet span< 1000mm)
4. Multi-color options: Yellow, White, Black, Blue, Grey, Red, etc.



Components



3.12.2 Rooftop Safety Walkway (Self-tapping Screw)



The walkway is installed on rooftops for installers and O&M operators to walk safely on the rooftops. It can effectively distribute the pedestrian load on the roof, protecting the roof from unnecessary damage and preventing people from falling.

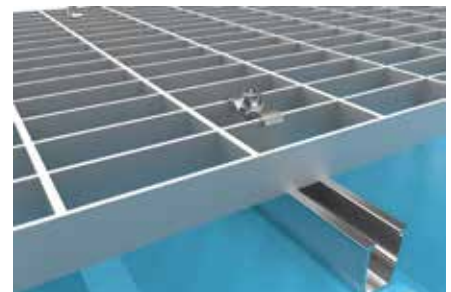
Optional Specifications:

Material option 1:

Hot-dip Galvanized (HDG) Steel, galvanization coating averagely $>65\mu\text{m}$

Material option 2:

Anodized Aluminum, anodization thickness averagely $>65\mu\text{m}$



Features

1. High strength, light-weight, easy to install and disassemble
2. Aging-resistant, strong anti-corrosion, durable
3. Fine appearance, bright surface, explosion-proof
4. Free of dirt, rain or snow, convenient maintenance

Components



Project Reference

BIPV Roof Mount



Metal Roof Clamps



Metal Roof Clamps



Metal Roof Clamps



Metal Roof Clamps



Metal Roof Clamps



厦门金固美能源科技有限公司

Xiamen Goomax Energy Technology Co., Ltd

运营中心：福建省厦门市湖里高新科技园安岭二路86号乔丹中心905号

Office: Jordan Building A, Flat 905, High-tech Park, Huli District, Xiamen, China

Factory Add: Goomax Industrial Park, Dongtian Town, Nan'an City, Fujian, China

Tel: +86-592-2938661 Fax: +86-592-2938662 Email: info@goomaxsolar.com

Web: www.goomaxsolar.com

固美金属股份有限公司

福建省南安市东田镇

Add: DongTian, Nan'an, Quanzhou, Fujian

Tel: +86-0595-2652 8996 Fax: +86-0595-2652 8903

不锈钢公司 Goomax Stainless Steel Products Co., Ltd

福建省南安市溪美街道南同公路莲塘路段

Add: Nantong Road, Ximei Town, Nan'an, Quanzhou, Fujian

Tel: +86-0595-8699 9988 Fax: +86-0595-2699 9989

广东固美 Guangdong Goomax

佛山市南海区狮山镇

Add: Shishan Town, Nanhai District, Foshan City,

Guangdong Province, China

Tel: +86-0757-6686 6006 Fax: +86-0592-2938662

西班牙公司 Spain Goomax

Add: Ubicació n: Passeig de Guayaquil, 17,

Barcelona CP.08030, España

Tel : 34-9376 39581

菲律宾公司 Philippine Goomax

Add: Binondo District, Manila City, Philippine

Tel: 0063-2-2421115 Fax: 0063-2-242 1116

新加坡公司 Singapore Goomax

Add: 7030 Ang kio ave #06-53, Singapore

Tel: 0065-6858 6266 Fax: 0065-6858 6366

缅甸公司 Myanmar Goomax

Add: No.51/B/1, East horse Race Course Road,

Tamwe Township, Yangon, Myanmar

Tel: 959- 4320 1666



Wechat



Web